



WINTER CAMP HANDBOOK



WELCOME

Camp Gan Israel, Winter Session is here!

Our staff are busy preparing to get to know your child and give them the summer of a lifetime. Our unique program offers a variety of activities that give attention to each camper as an individual as well as creating a strong camp community. The program is designed to promote social, emotional and cultural well-being and growth. With themes relating to their Jewish identity and by infusing the daily schedule with activities, arts and crafts, songs, and stories, their experience becomes interactive and meaningful.

Our staff are devoted to giving personal attention and connecting with each camper. Your child will grow and form special relationships with friends and role models that will last them a lifetime.

At Camp Gan Israel, our #1 focus and priority is the safety and well-being of your child. We are committed to providing a superb day camp experience for your child. If you have any questions, suggestions or concerns please feel free to contact us.

We are looking forward to an exciting summer!

Yours sincerely,

Mendel and Mussi Weinfeld



CONTACT INFORMATION

Email: info@ganisraelsj.com

Camp Director: (408) 757-2967*

Office Hours: 9:00 am – 3:45 pm

Financial Support: (408) 910-2034

Website: www.ganisraelsj.com

**During camp hours only*

Please don't approach counselors with concerns during camp hours so they can remain focused on the children in their care.

The director is available for all questions and concerns.

Important communication will be sent through the camp WhatsApp group. If you prefer to receive updates via email, please notify info@ganisraelsj.com.



LOCATION / DATES & TIMES

We are located at the **Chabad House**
at **5580 Almaden Expressway, San Jose, CA 95118.**

The Winter Camp Season begins on Monday,
December 23, 2024, and runs through Friday,
January 3, 2025.

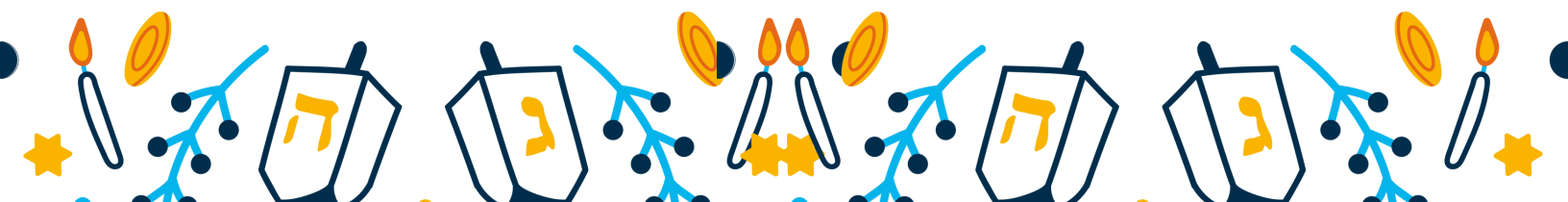
Camp runs from 9:00 am to 3:45pm Monday-Thursday
and from 9:00am to 2:00pm on Fridays.

Drop off is from 8:50-9:10.

For late arrivals, please message the director, as the
entrances and gates will be locked during camp hours.

Pick up is from 3:35-3:45 Monday-Thursday and
1:50-2:00 pm on Fridays. Please be prompt.

**Please note that camp enters from the back entrance of the building. Please do
not park your car, unless your child is 2-4 years old.*



LUNCH & SNACKS

Camp Gan Israel provides a full lunch program for all our campers and staff, no additional fees! Fresh daily meals will be prepared by our dedicated kitchen staff. Our menu includes a starch, protein and vegetable each day.

***Food from home is not allowed on camp grounds.** We go out of our way to accommodate each camper's needs. Please email us if your child has specific meal needs or will be celebrating a birthday in camp.*

MENU: *(Subject to change)*

Monday: Macaroni and Cheese, Fresh salad, Peaches

Tuesday: Eggs, French Fries, Cucumbers, Baby Carrots

Wednesday: Fish Sticks, Rice, Chick peas, Peppers

Thursday: Sandwiches - Jelly, Cream cheese, Tuna, Egg Salad, Hummus

Friday: Falafel, Pita, Fresh Salad, Corn

We will also have alternative options including bread with spreads & cereal with dairy free milk available daily.

SNACK

Camp Gan Israel serves two nutritious snacks daily. Our snack menu includes fruits or vegetables in the morning and a crunchy snack in the afternoon.

Although water will be available for drinking throughout the day, we highly recommend sending a labeled water bottle with your child.

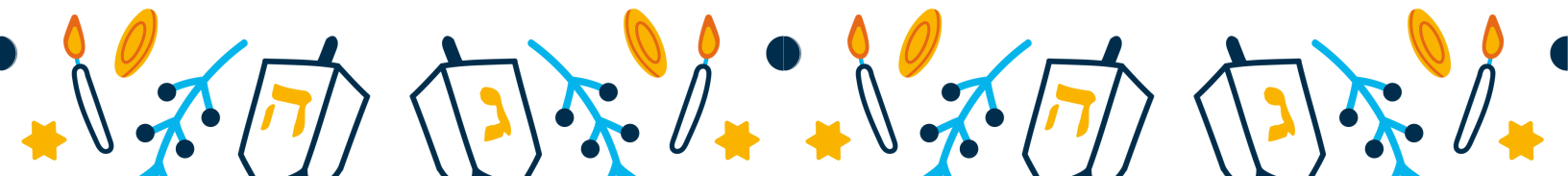


WHAT TO SEND

- WATER BOTTLE with their full name written on it
- CAMP TSHIRT on Tuesdays and Thursdays, campers are required to wear their camp shirts visibly. Campers who forget their t-shirts will automatically be charged a \$3 fee and lent a t-shirt.
- LABEL everything that is sent to camp

WHAT TO LEAVE AT HOME

- FOOD No outside food is allowed on camp grounds.
- ELECTRONICS Cellphones and all electronic devices, including **smart watches**, are not permitted on camp grounds. All electronics that are used during camp will be sent to the office for the day.
- PERSONAL ITEMS - jewelry, toys, etc. personal items should not be sent to camp. Any toys or cards seen during camp will be sent to the office for the day. Please do not send your child to camp with any valuables.
- DANGEROUS ITEMS Alcohol, drugs, weapons of any nature (including small pocket knives, slingshots etc.) dangerous items, pets or animals of any kind can never be brought onto the camp grounds. Violation of this policy may result in immediate termination from the program without financial reimbursement.
- MONEY campers may not purchase anything on trips; there is no reason to send along money.



JUNIOR DIVISION

Our young campers have an incredible sensory based schedule filled with fun and Torah lessons. Their incredible staff look after each child with love and dedication.

ADDITIONAL SUPPLIES:

In addition to a labeled water bottle, younger campers must bring a full change of clothes on their first day of camp. Those that require should bring wipes and diapers as well. Children who nap better with a blanket or stuffed toy can bring it to camp as well.

Monday: Sensory Play, Mad Science

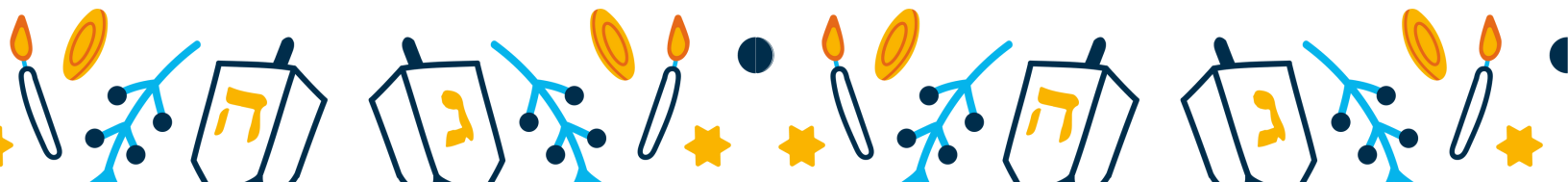
Tuesday: Baking, Sports

Wednesday: Color Dress Up, Sensory Play

Thursday: Art, Music and Movement

Friday: Shabbat Party

The fun is brought to camp for our younger division. If a field trip will take place, parents will be notified beforehand.



MAIN DIVISION

With daily blessings and prayers, a taste of Shabbat on Fridays, and special programs throughout camp, campers express their Jewish pride. This year, campers will experience daily Chanukah related activities as we celebrate the holiday together.

The CGI sports program offers a safe and fun environment for children to develop self-esteem, a positive attitude towards sports and teamwork all while enjoying a good physical workout with our a wide range of fun sports and activities.

Tapping inward, art allows children a centered space to get creative and create something beautiful.

We plan our trips with the Bay Area's best fun spots to include a wide variety of activities and styles keeping in mind our #1 safety priority. All campers and staff are required to wear the Camp Gan Israel t-shirt on all trip days. While our goal is to return to camp with plenty of time for the 3:45 dismissal, occasionally circumstances cause us to be delayed. Should there be a delay, all parents will be notified via the camp WhatsApp group.

Join the fun on January 1st for a Chanukah Carnival Celebration at camp. Details to follow.



ANTI-BULLYING POLICY

Bullying is when one or more people exclude, tease, taunt, hit, or put down another person with the intent to hurt another. Bullying happens when a person or group of people want to have power over another and use their power to get their way, at the expense of someone else.

At Camp Gan Israel bullying is inexcusable, and we have a firm policy against all types of bullying. Our Camp philosophy is based on our mission statement which ensures that every camper has the opportunity to a safe and fun camp experience. We work together as a team to ensure that campers gain self-confidence, make new friends, and go home with great memories.

Our leadership addresses all incidents of bullying seriously and trains staff to promote communication between staff and campers so both staff and campers will be comfortable alerting us to any problems during their camp experience. Every person has the right to expect to have the best possible experience at camp, and by working together as a team to identify and manage bullying, we help ensure that all campers and staff have a great summer at Camp Gan Israel.

